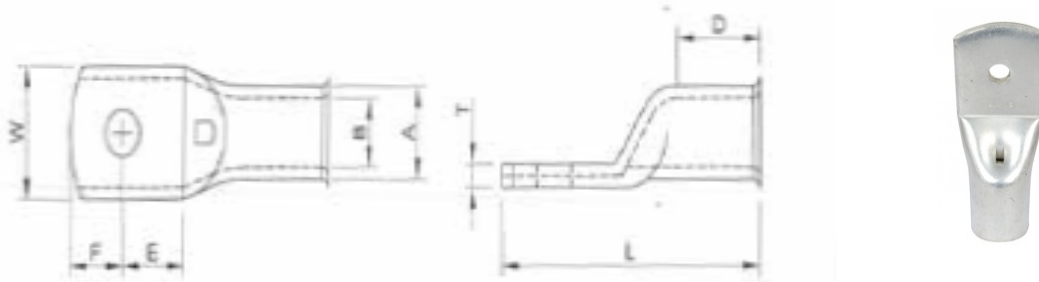




K. LACEY WIRES AND CABLES

STANDARD DUTY TERMINAL LUGS – TYPE NT



PRODUCT DESCRIPTION

Standard Duty terminals manufactured from optimum-purity original mill-produced copper. The standard electroplated coating of tin maintains electrical performance for cables used with normal rated currents and with connection temperatures between -20°C and +60°C.

CABLE TERMINATIONS

Standard-Duty terminals have a lighter wall section and are designed to provide secure crimping and long life cycles when working currents are actively limited to the cable's normal rating.

COMPLIANCE

All our terminals are capable of compliance with EN 61238, and many other performance standards, but please note that verification requires testing a combination of cable, termination and crimping method.

A further range of coatings, including nickel and silver, is available to optimize reliability and performance in critical applications and extreme conditions.

Both standard and bespoke tooling and dies are available for all our terminals along with detailed specifications of process parameters. For details of our range of crimping tools please contact our sales office.



CONTACT US NOW FOR A QUOTATION

Tel. +44 (0) 1903 771336 Fax. +44 (0) 1903 255411 Email. sales@klaceyables.co.uk

INFORMATION GIVEN IS BASED ON GENERAL EXPERIENCE ONLY AND IS GIVEN IN GOOD FAITH. NO WARRANTY IS GIVEN WITH RESPECT TO THE INFORMATION AND USERS MUST DETERMINE THE SUITABILITY OF THE PRODUCT PRIOR TO ANY PARTICULAR USE.

AS9120 Rev A and ISO9001:2008 APPROVED BSI. RS000146 BAE APPROVED

K. LACEY WIRES AND CABLES STANDARD DUTY TERMINAL LUGS – TYPE NT

CAT REF	STUD SIZE (MM)	A	B	W	E	F	D	L	T
CAT10	6NT	6.2	4.5	10.4	6.2	6.2	9.3	24.0	1.3
	8NT	6.6	4.7	13.5	8.0	7.0	9.5	29.5	1.2
CAT16	5NT	7.5	5.5	10.8	8.8	6.2	9.5	30.0	2.0
	6NT	7.5	5.5	10.8	8.8	6.2	9.5	30.0	2.0
	8NT	7.5	5.5	13.5	8.0	7.0	9.5	30.0	1.6
	10NT	7.5	5.5	15.0	10.9	9.6	9.5	35.5	1.5
CAT25	6NT	9.4	7.0	13.8	8.8	6.2	12.0	32.5	2.4
	8NT	9.4	7.0	13.8	8.0	7.0	12.0	32.5	2.4
	10NT	9.4	7.0	16.0	10.9	9.6	12.0	38.0	2.1
	12NT	9.4	7.0	18.0	10.5	10.0	12.0	38.0	1.9
CAT35	5NT, 6NT	10.6	8.2	15.3	8.8	6.2	14.0	35.0	2.4
	8NT	10.6	8.2	15.3	8.0	7.0	14.0	35.0	2.4
	10NT	10.6	8.2	15.3	10.9	9.6	14.0	40.5	2.4
	12NT	10.6	8.2	18.0	10.5	10.0	14.0	40.5	2.2
CAT50	6NT	11.9	9.5	17.4	8.8	6.2	14.9	37.0	2.5
	8NT	11.9	9.5	17.4	8.0	7.0	14.9	37.0	2.5
	10NT	11.9	9.5	17.4	10.9	9.6	14.9	42.5	2.5
	12NT	11.9	9.5	17.4	10.5	10.0	14.9	42.5	2.5
CAT70	6NT	14.5	11.5	20.9	8.8	6.2	16.0	40.5	3.0
	8NT	14.5	11.5	20.9	8.0	7.0	16.0	40.5	3.0
	10NT	14.5	11.5	20.9	10.9	9.6	16.0	46.0	3.0
	12NT	14.5	11.5	20.9	10.5	10.0	16.0	46.0	3.0
	14NT, 16NT	14.5	11.5	20.9	16.0	13.0	17.0	55.0	3.0
CAT95	8NT	16.7	13.5	24.3	10.9	9.6	18.0	49.5	3.2
	10NT	16.7	13.5	24.3	10.9	9.6	19.0	49.5	3.2
	12NT	16.7	13.5	24.3	10.5	10.0	19.0	49.5	3.2
CAT120	B, 8NT, 10NT, 12NT	19.0	15.0	27.3	14.0	10.0	19.0	55.5	4.0
	14NT	19.0	15.0	27.3	13.2	10.8	19.0	55.5	4.0
CAT150	8NT, 10NT, 12NT	21.0	16.5	30.2	14.0	10.0	23.0	61.0	4.5
	14NT	21.0	16.5	30.2	13.2	10.8	23.0	61.0	4.5
CAT185	B, 8NT, 10NT, 12NT	23.0	18.5	33.3	14.0	10.0	26.0	66.5	4.5
	14NT	23.0	18.5	33.3	13.2	10.8	26.0	66.5	4.5

NOTE: Stud Size B = Blank Palm Also available with no inspection hole



CONTACT US NOW FOR A QUOTATION

Tel. +44 (0) 1903 771336 Fax. +44 (0) 1903 255411 Email. sales@klaceyables.co.uk

INFORMATION GIVEN IS BASED ON GENERAL EXPERIENCE ONLY AND IS GIVEN IN GOOD FAITH. NO WARRANTY IS GIVEN WITH RESPECT TO THE INFORMATION AND USERS MUST DETERMINE THE SUITABILITY OF THE PRODUCT PRIOR TO ANY PARTICULAR USE.

AS9120 Rev A and ISO9001:2008 APPROVED BSI. RS000146 BAE APPROVED