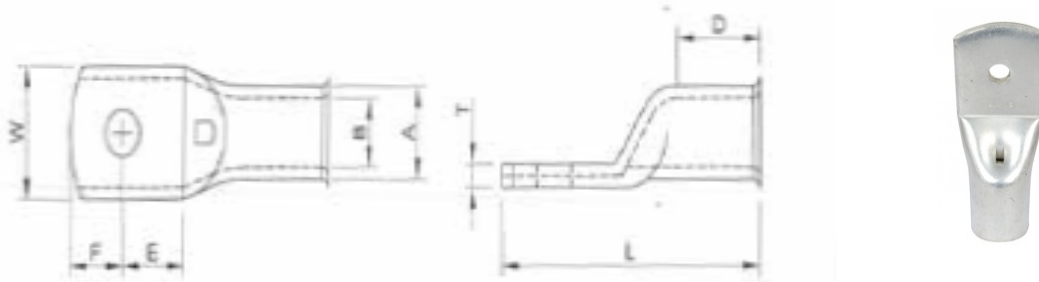




K. LACEY WIRES AND CABLES

HEAVY DUTY TERMINAL LUGS – TYPE HD



PRODUCT DESCRIPTION

Heavy Duty terminals manufactured from optimum-purity original mill-produced copper. The standard electroplated coating of tin maintains electrical performance for cables used with normal rated currents and with connection temperatures between -20°C and +60°C.

CABLE TERMINATIONS

Heavy-Duty terminals have a cross section nominally equal to the cable and are required for applications expected to survive high surge currents.

COMPLIANCE

All our terminals are capable of compliance with EN 61238, and many other performance standards, but please note that verification requires testing a combination of cable, termination and crimping method.

A further range of coatings, including nickel and silver, is available to optimize reliability and performance in critical applications and extreme conditions.

Both standard and bespoke tooling and dies are available for all our terminals along with detailed specifications of process parameters. For details of our range of crimping tools please contact our sales office.



CONTACT US NOW FOR A QUOTATION

Tel. +44 (0) 1903 771336 Fax. +44 (0) 1903 255411 Email. sales@klaceyables.co.uk

INFORMATION GIVEN IS BASED ON GENERAL EXPERIENCE ONLY AND IS GIVEN IN GOOD FAITH. NO WARRANTY IS GIVEN WITH RESPECT TO THE INFORMATION AND USERS MUST DETERMINE THE SUITABILITY OF THE PRODUCT PRIOR TO ANY PARTICULAR USE.

AS9120 Rev A and ISO9001:2008 APPROVED BSI. RS000146 BAE APPROVED



K. LACEY WIRES AND CABLES

HEAVY DUTY TERMINAL LUGS – TYPE HD

CAT REF	STUD SIZE (MM)	A	B	W	E	F	D	L	T
CAT1.5	4,5	3.6	1.9	8	5	4	6	18	0.9
	6	3.6	1.9	10	6	5.5	6	20	0.6
CAT2.5	4	3.9	2.4	7.7	5	4	7.5	20	1
	5	3.9	2.4	10	5.5	5.5	8	21.5	1.1
	6	3.9	2.4	10	6.5	5.5	8	21.5	0.6
	8	4.4	2.6	12	9	6	8	26.5	0.7
CAT4	4	4.7	3	10	6	5	8	21.5	1.1
	5,6	4.7	3	10	5.5	5.5	8	21.5	1.1
	8	4.7	3	12	9	6	7.5	26.5	0.9
CAT6	4	5.5	3.8	10	5.9	54.1	8.5	24.5	1.2
	5	5.5	3.8	10	5.9	5.1	8.5	24.5	1.2
	6	5.5	3.8	10	5.9	54.1	8.5	24.5	1.2
	8	5.5	3.8	12	8	7	8.5	27.5	1
	10	5.5	3.8	15	13	8	8.5	34	0.9
CAT10	B, 5, 6,	6.9	4.4	11	5.9	5.1	9	27	2
	8	6.9	4.4	14	9.7	8.3	10	35	1.6
	10	6.9	4.4	16	12	10	10	39	1.5
	12	6.9	4.4	18	12	10	10	39	1.2
CAT16	B, 5, 6	8	5.6	11.5	5.9	5.1	11	28.5	2.2
	8	8	5.6	14	9.7	8.3	13	38	1.8
	10	8	5.6	16	12	10	13	42	1.6
	12	8	5.6	18	12	10	13	42	1.3
CAT25	B, 5, 6, 8	9.5	7	13.5	9.7	8.3	13	40	2.4
	10	9.5	7	16	12	10	13	44	2
	12	9.5	7	18	12	10	13	44	1.8
CAT35	B, 5, 6, 8	11	8.2	15.5	9.7	8.3	14	41	2.8
	10	11	8.2	15.5	12	10	14	45	2.8
	12	11	8.2	18	12	10	14	45	2.5
CAT50	B, 5, 6, 8	12.1	9.5	17.2	9.7	8.3	18	46	2.6
	10, 12	12.1	9.5	17.2	12	10	18	50	2.6
	14, 16	15	11.5	21.4	12	10	18	52	3.5
CAT70	B, 5, 6, 8	15	11.5	21.4	9.7	8.3	18	48	3.5
	10, 12	15	11.5	21.4	12	10	18	52	3.5
	14, 16	15	11.5	21.4	16.5	16.5	18	64	3.5
CAT95	B, 8, 10, 12	17	13.5	24.5	12	10	24	58	3.5
	14, 16	15	11.5	24.5	16.5	16.5	18	64	3.5
CAT120	B, 8, 10, 12, 14, 16	19	15	27.2	16.5	16.5	27	75	4
	20	19	15	27.2	18.7	14.3	27	75	4
CAT150	B, 8, 10, 12, 14, 16	21	16.5	30	16.5	16.5	27	78	4.5
	20	21	16.5	30	17	16	27	78	4.5
CAT185	B, 8, 10, 12, 14, 16	23	18.5	33.5	16.5	16.5	30	82	4.5
	20	23	18.5	33.5	17	16	30	82	4.5
CAT240	B, 8, 10, 12, 14, 16, 20	26	21	37.7	18	17	32	88	5
CAT300	B, 10, 12, 14, 16, 20	28	23	41	17	17	37	95	5
CAT400	B, 10, 12, 14, 16, 20	32	27	47.3	20	20	38	103	5
CAT500	B, 8, 10, 12, 14, 16, 18, 20	36	30	53	20	20	43	105	6
CAT630	B, 10, 12, 14, 16, 20, 22	44	33.8	63	24	24	46	125	10.2
CAT800	B, 10, 12, 14, 16, 18, 20, 22	49	38	70	36	36	56	169	11
CAT1000	B, 10, 12, 14, 16, 18, 20, 22	53	42.5	77	33.5	33.5	56	170	10.5

NOTE: Stud Size B = Blank Palm Also available with no inspection hole

CONTACT US NOW FOR A QUOTATION

Tel. +44 (0) 1903 771336 Fax. +44 (0) 1903 255411 Email. sales@klaceyables.co.uk

INFORMATION GIVEN IS BASED ON GENERAL EXPERIENCE ONLY AND IS GIVEN IN GOOD FAITH. NO WARRANTY IS GIVEN WITH RESPECT TO THE INFORMATION AND USERS MUST DETERMINE THE SUITABILITY OF THE PRODUCT PRIOR TO ANY PARTICULAR USE.

AS9120 Rev A and ISO9001:2008 APPROVED BSI. RS000146 BAE APPROVED